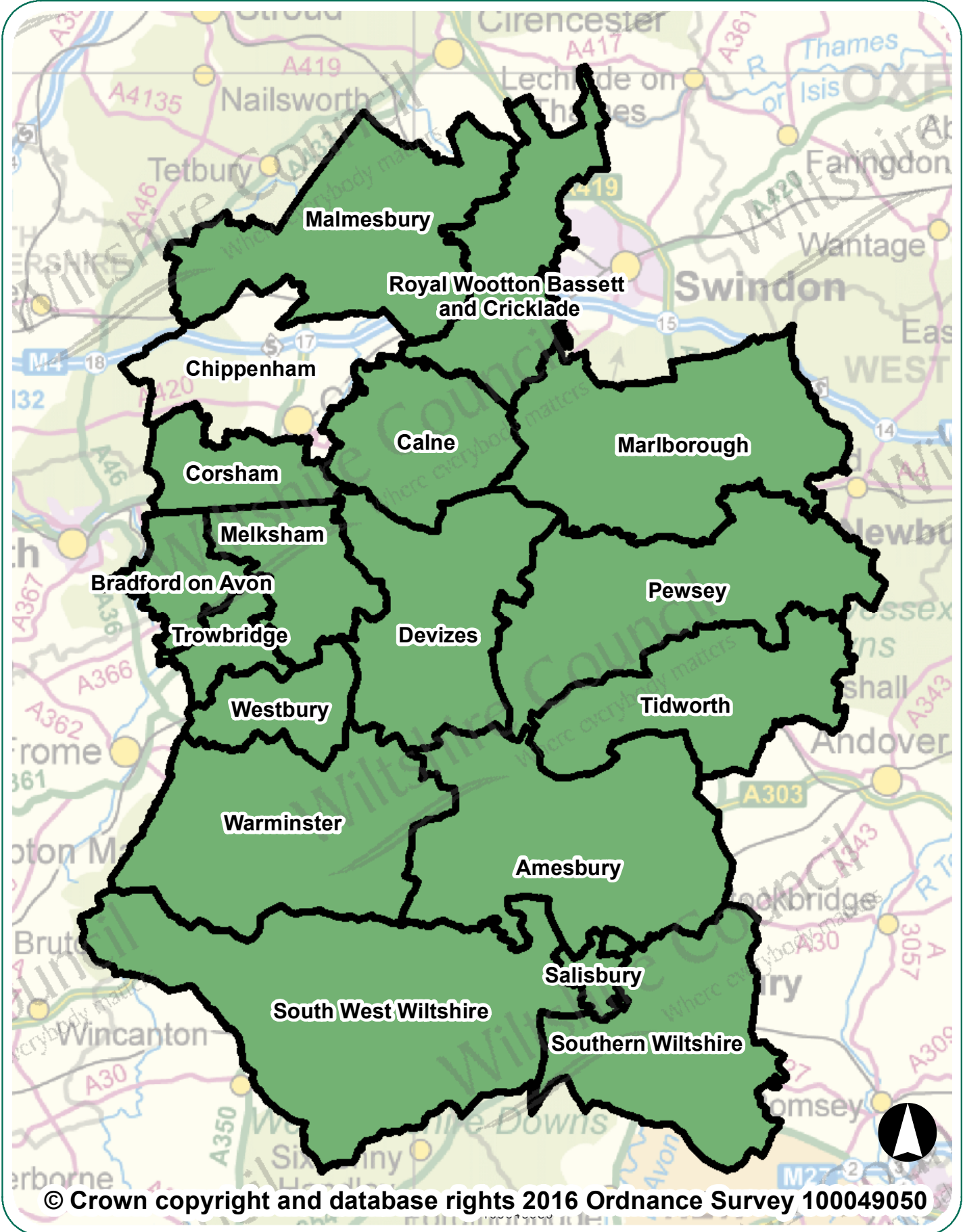


# Chippenham Area Board Highway Information



# Chippenham Area Board Highway Information

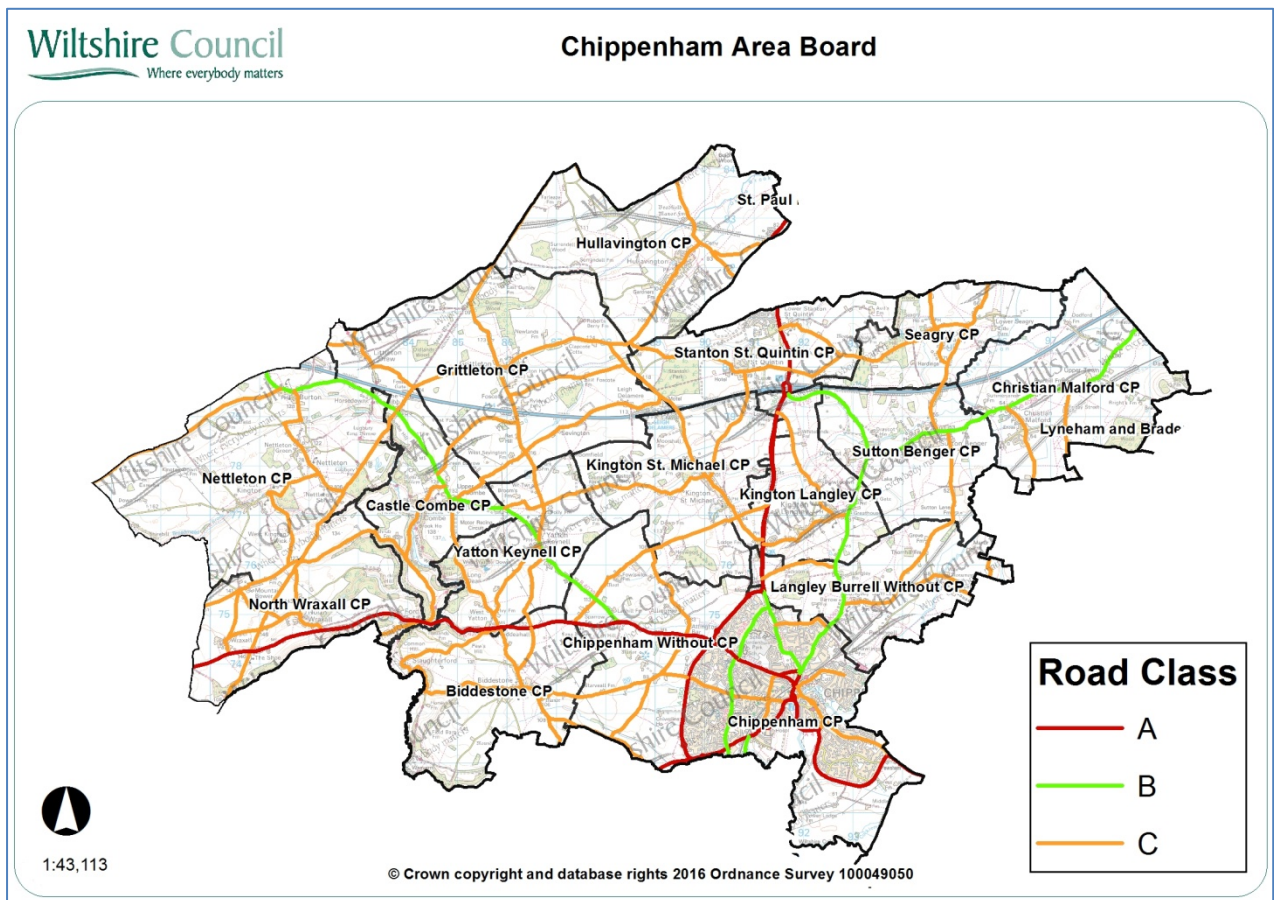
## Introduction

This document summarises highway information for your area board. It lists the recent highway and related work carried out by Wiltshire Council, including the road resurfacing carried out during the first two years of the 'Local Highways Investment Fund 2014 – 2020', and includes other information which should be of interest.

Further information on the Council's activities is available at the website [www.wiltshire.gov.uk](http://www.wiltshire.gov.uk). If you wish to report a specific highway issue please use My Wiltshire. Details are provided at the end of this document.

## Parishes in the community area are:

Langley Burrell W/O, Christian Malford, North Wraxall, Nettleton, Castle Combe, Yatton Keynell, Grittleton, Chippenham W/O, Kington St Michael, Kington Langley, Sutton Benger, Stanton St Quintin, Seagry, Chippenham, Biddestone, Hullavington



## Network statistics in your area

### Road length by class

Road type	Urban (km)	Rural (km)
A Class Roads	7.47	30.48
B Class Roads	13.97	15.264
C Class Roads	26.05	123.48
Unclassified Roads	111.18	52.7
<b>Total</b>	<b>158.67</b>	<b>221.924</b>
	<b>Overall Total</b>	<b>380.59</b>

The council categorises its roads to reflect their importance. This enables an effective assignment of highway inspection frequencies and maintenance standards.

### Highway assets in your area

The council keeps an inventory of its highway assets in order to assist planning its highway maintenance. Important statistics relating to your board area are:

Asset Type	Measure
Carriageway	380.59km
Footways adjacent to road	229km
Footways (linked)	28.88km
White road centre lines	28km
Road kerbs	311km
Grass verge (maintained)	542 km
Drainage grips	2,981 number
Drainage pipe grips	373 number
Drainage gullies	9,193 number
Road signs	3,462 number
Street lights	5,828 number

## **Major highway maintenance**

### **Road resurfacing**

Wiltshire has over 3,000 miles of road. The Council's 'Local Highways Investment Fund 2014 – 2020' is making a massive investment to improve the condition of the roads in Wiltshire over six years. The programme of work started in April 2014, and is designed and supervised by the Council's consultants Atkins, with the work carried out by our main highway contractors Tarmac and Eurovia.

The work carried out in the first two years of the programme has improved a considerable number of the roads in previously poor condition. The locations of sites treated in recent years are shown below.

### **Carriageway repairs**

As well as resurfacing roads other works are undertaken to make localised repairs to keep the roads safe. The works undertaken in your area since 2014 are shown on the map below.




The wet winter and flooding in previous years has resulted in substantial damage to the road network. It is important that serious defects are treated promptly to keep the roads safe. The Council currently operates four Pothole teams that respond to urgent issues to keep the roads safe.

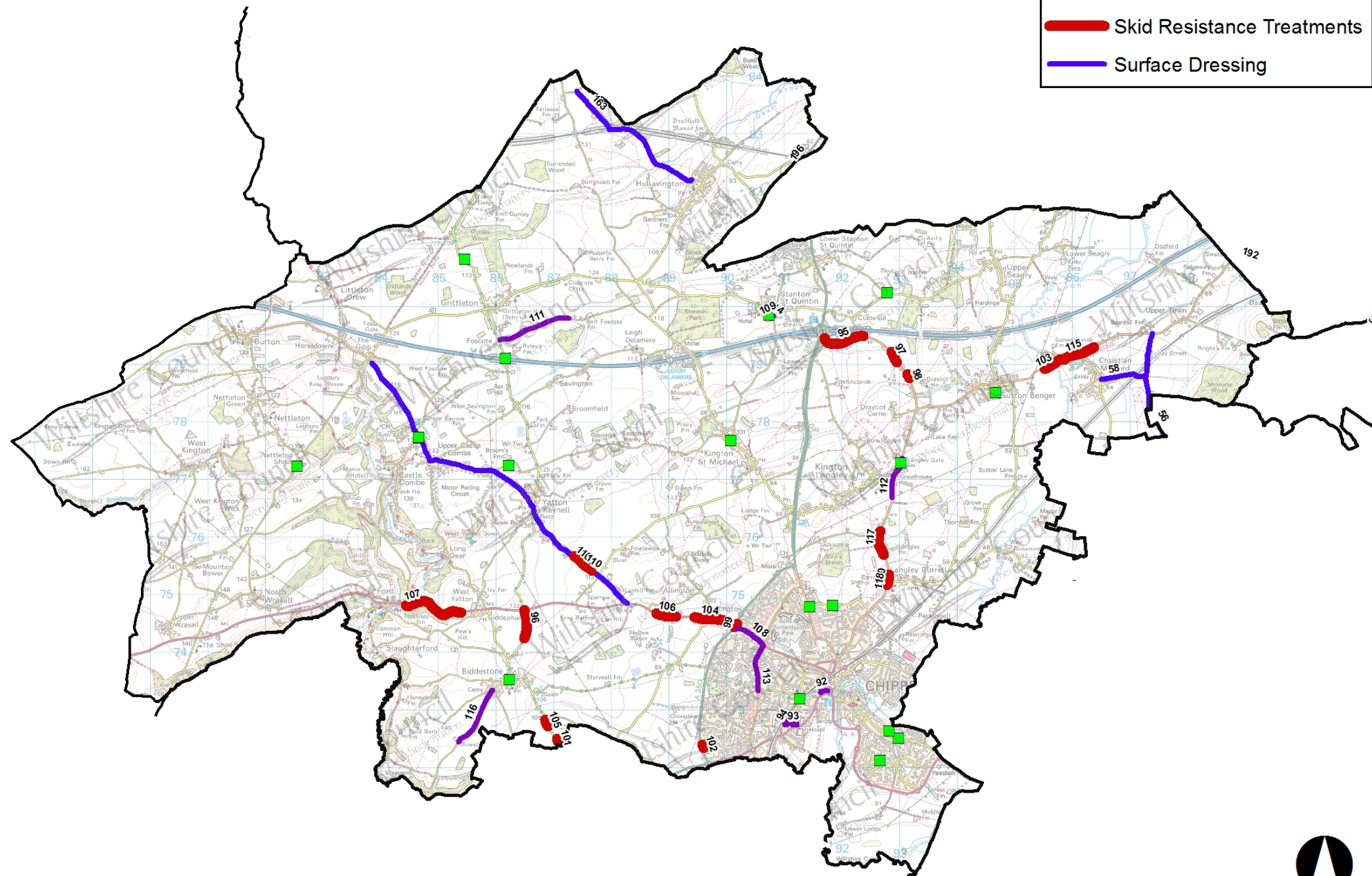


Plan showing major maintenance schemes & hand/machine patching sites completed since 2014



Chippenham Area Board

-  Hand/Machine Patching
-  Resurfacing
-  Skid Resistance Treatments
-  Surface Dressing



1:43,086

© Crown copyright and database rights 2016 Ordnance Survey 100049050



**Major maintenance completed since 2014**

No	Location	Works
91	B4039 south of junction with Fosse Way/The Gibb to junction with A420 Bristol Road	Surface Dressing
56	Unnamed road - Foxham north C132 to B4069	Surface Dressing
162	Thomson's Hill	Surface Dressing
163	Hill Hayes Lane, Hullavington	Surface Dressing
58	Lye Common (junction with Station Road to junction with Thorn end)	Surface Dressing
92	Ivy Road, Chippenham	Resurfacing
93	St Margarets Gardens	Resurfacing
94	St Peters Close, Chippenham	Resurfacing
95	B4122 east of M4 Roundabout Junction 17, Stanton St Quintin	Skid Resistance Improvements
96	Yatton Road, Biddestone	Skid Resistance Improvements
97	Entrance Draycot House To Entrance Oakleigh Acres	Skid Resistance Improvements
98	Entrance Draycot House To Entrance Oakleigh Acres	Skid Resistance Improvements
99	Bumpers Farm Roundabout to Brook Roundabout Western Bypass	Skid Resistance Improvements
100	C375 To C18	Skid Resistance Improvements
101	South Boundary Of Wood To C159	Skid Resistance Improvements
102	Cepen Park South Rbt (Chippenham)	Skid Resistance Improvements
103	30mph Sutton Benger To 30mph Christian Malford	Skid Resistance Improvements
104	A420/A350 at Bumpers Farm Roundabout, Chippenham	Skid Resistance Improvements
105	Biddestone road, Biddestone	Skid Resistance Improvements
106	A420 Bristol road, Allington	Skid Resistance Improvements
107	A420 bends east of Ford	Skid Resistance Improvements
108	A420 Bristol Road Chippenham Folly Cross roundabouts to Bumpers Farm roundabout	Resurfacing
109	Stanton St Quinton Court Gardens carriageway and footway	Resurfacing
110	40Mph To Track Opposite Tiddley Wink Cottages	Skid Resistance Improvements

Chippenham Area Board Highway Information

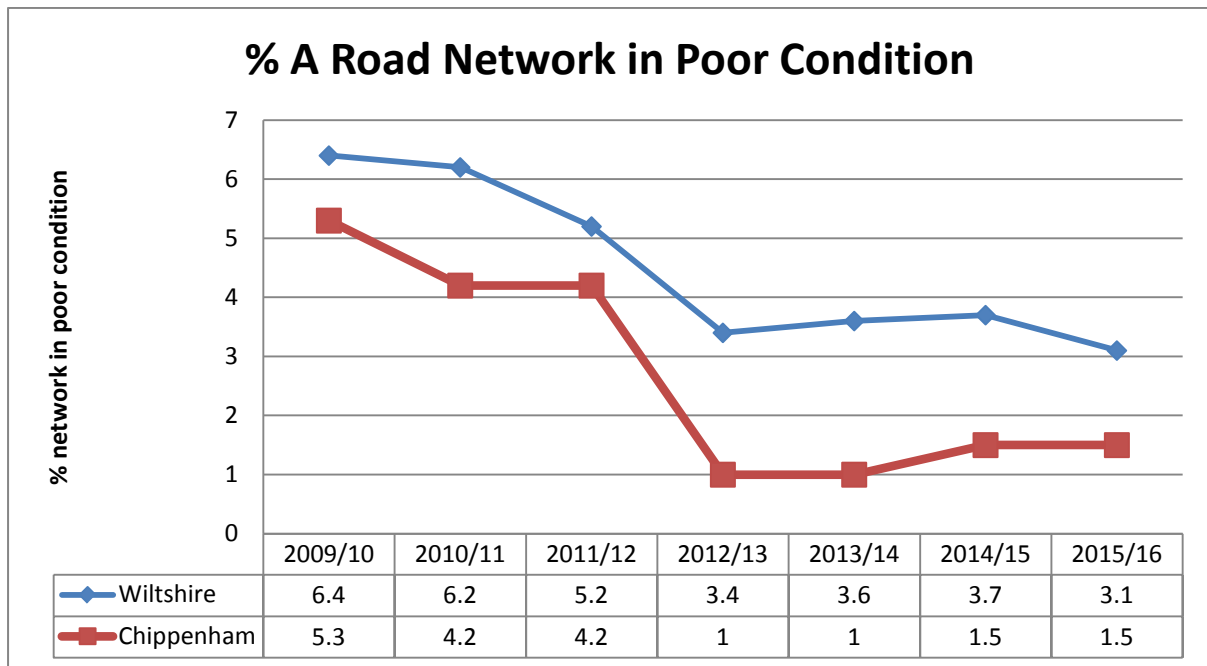
No	Location	Works
111	Crowdown Lane, Foscote	Resurfacing
112	B4069 Kington Langley	Resurfacing
113	B4528 Hungerdown Lane, Chippenham	Resurfacing
114	Court Gardens, Stanton St Quintin	Resurfacing
115	B4069 Sutton Benger & Christian Malford	Skid Resistance Improvements
116	UC Weavern Lane, Biddestone	Resurfacing
117	B4069 Swindon Road at Jacksoms Lane, Langley Burrell	Skid Resistance Improvements
118	B4069 Chippenham Road at Junction with Maud Heaths Causeway, Langley Burrell	Skid Resistance Improvements

## Highway conditions and technical surveys in your area

Roads deteriorate in condition because of various factors, including traffic volumes, ground conditions, and weather and drainage issues. Technical surveys of the condition of the highway network are carried out annually and the information is used to help prioritise schemes. Road safety is the priority, and maintaining adequate skid resistance on the busy high speed roads is vital.

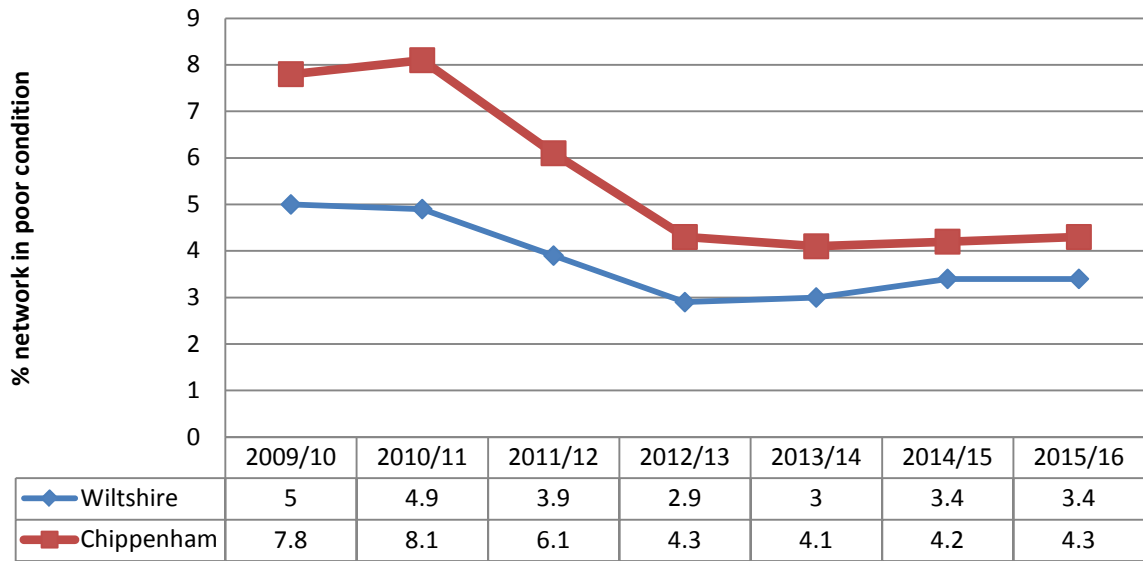
The surveys include the use of a vehicle equipped with lasers and cameras to record road surface condition, which allows us to report on road conditions to the Department for Transport and to prioritise maintenance work. Other surveys include measuring skid resistance on the busier roads.

The road conditions in your area are shown below. It should be noted that low numbers are good because it indicates that less road length should be considered for treatment. More detailed information is shown in Appendix A.

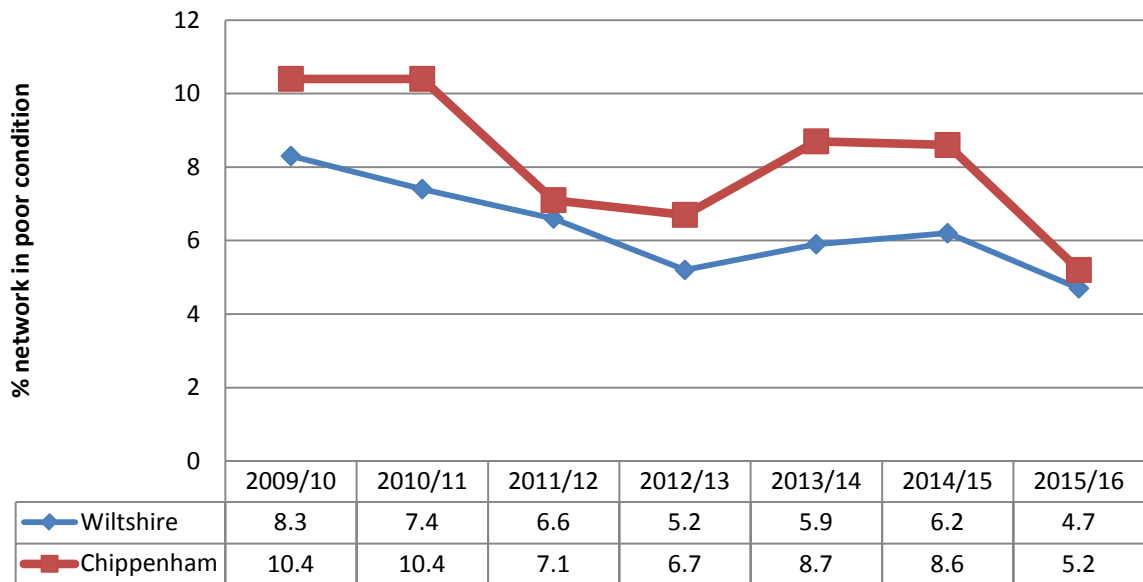


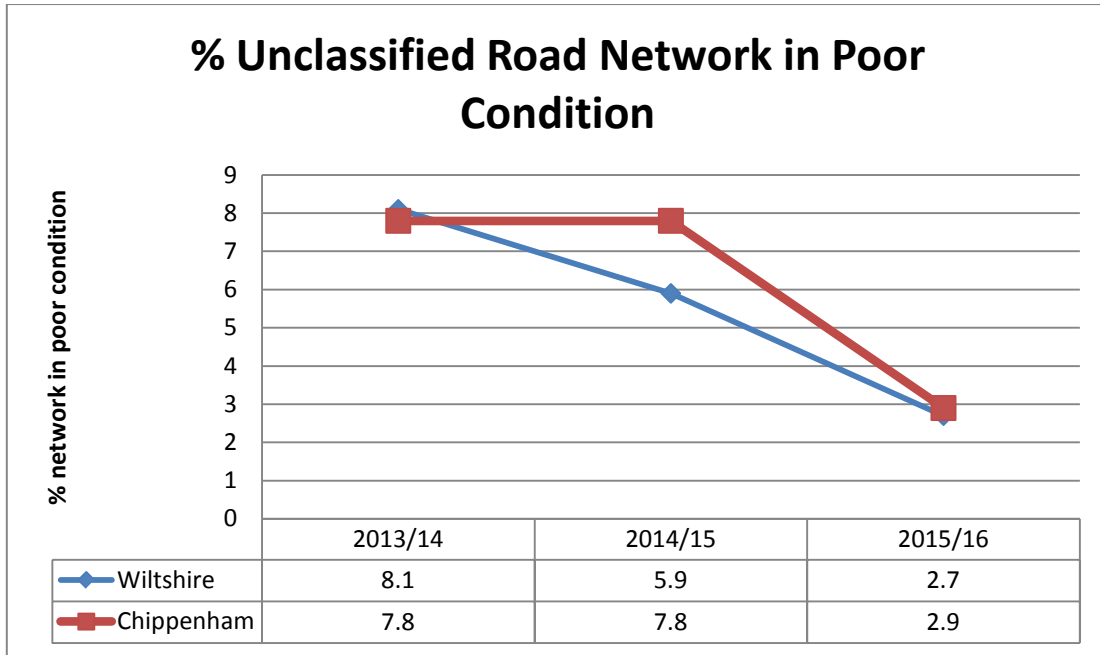


### % B Road Network in Poor Condition



### % C Road Network in Poor Condition





## Integrated transport, bridge and drainage works

### Integrated transport

The Council's traffic engineering team work with our contractors to plan and deliver a range of projects to the local community, most notably through the Area Boards and Community Area Transport Groups (CATGs). The schemes range in size and complexity from simple sign installation through to more complex road safety and improvement schemes.

### Bridges

The Council regularly inspects its bridges and other highway structures. There is a programme of renewal and refurbishment works to keep them in good condition, as well as having to respond to damage caused by collisions.

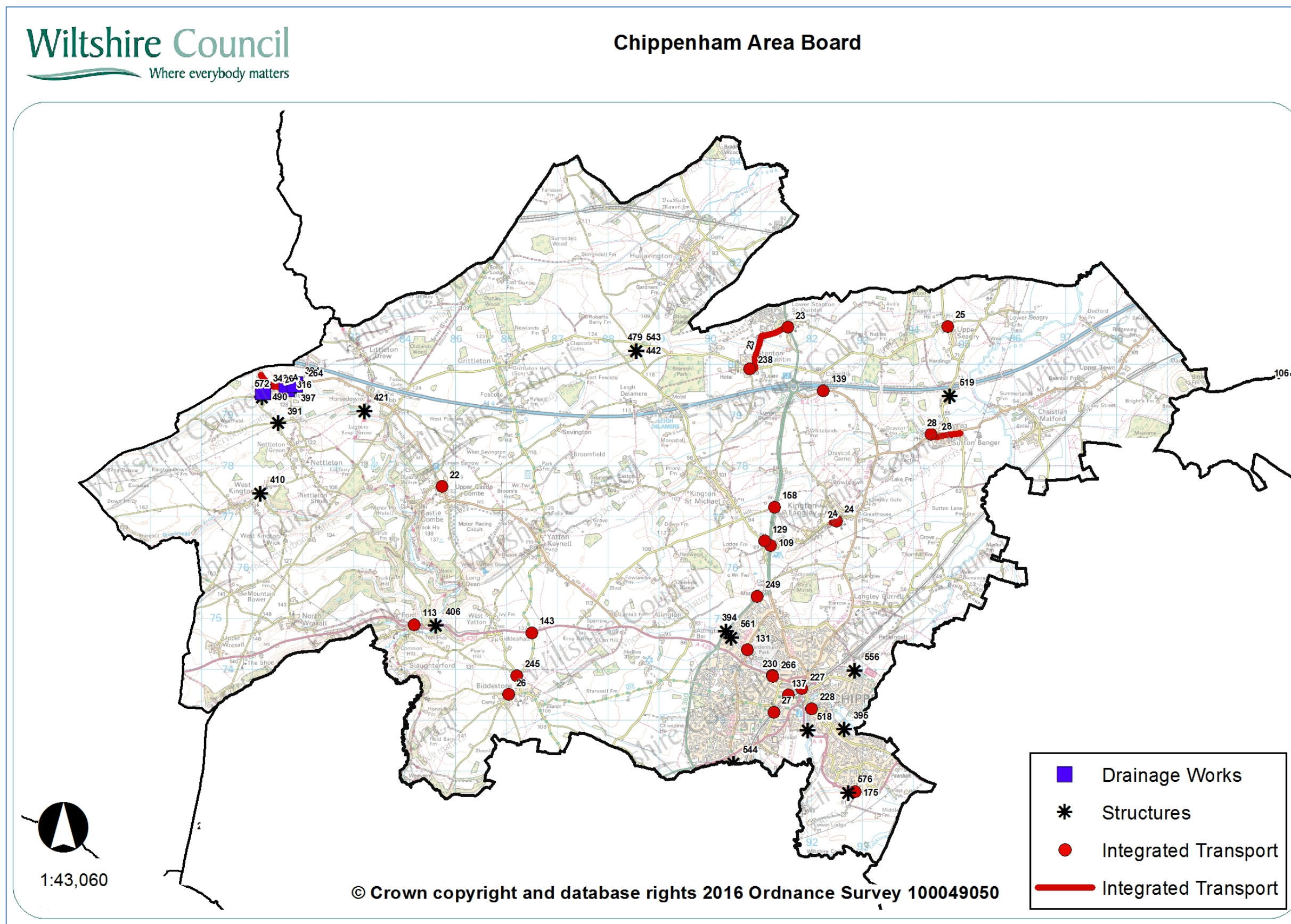
### Drainage

Programmes of drainage investigations, repairs and flood alleviation schemes are undertaken throughout the year, but the flooding in recent years has meant that there has been a need to respond immediately to flooding issues, as well as dealing with previously identified problem sites. The drainage improvement and flood alleviation work is co-ordinated through the Council's Operational Flood Working Groups that include the Environment Agency, Wessex Water, other organisations and stakeholders.

### Recent work in your area

The Integrated Transport, Bridge and Drainage schemes carried out in your area since 2015 are listed below.

Plan showing completed integrated transport, bridge and drainage schemes since 2015



**Integrated transport schemes since 2015**

No	Location	Description
175	Forest Lane, A4 Pewsham	Road marking amendments
227	Marshfield Road Gyratory, Chippenham	Cycle links
228	Tesco Emery Gate, Chippenham	Cycle parking
230	Bristol Road/Woodlands Road, Chippenham	Toucan crossing
238	Kington Lane, Stanton St Quinton	Junction amendments
245	Cuttle Lane, Biddestone	Substantive CATG bollard installation
249	West Cepen Park, Chippenham	Lanes merge signs
264	Burton Hillside/The street	Burton Hillside/The street village gates
266	Redlands Estate, Chippenham	20mph speed limit
22	Lower Castle Combe, Chippenham	Coach signs
23	Church Lane, Stanton St Quinton	Lane signs
24	Kington Langley	Kington Langley bend by church - signs and lines
25	Upper Seagry	Upper Seagry on carriageway parking bays
26	Slaughterford	Various roads - Unsuitable for HGV signs
27	Lowden Tunnel, Chippenham	Pedestrian improvements
28	Chestnut Road, Sutton Benger	20mph speed limit
109	Kington Langley	Village nameplate
113	A420 Ford	Colerne direction sign
129	Kington St Michael	Direction sign to Jolly Huntsman
131	Sheldon School, Chippenham	Flag sign
137	Chippenham	Direction signs to Emmanuel Church

139	B4122 Stanton St Quintin	Recycling Centre - warning signs and markings
143	A420 Biddestone Crossroads	Regulatory sign
158	A350 north of Chippenham	Access signs

### Bridge schemes since 2014

No	Location	Description
544	Chippenham	RTC Masonry Repairs
556	Chippenham	Vegetation clearance, masonry repairs
561	Chippenham Without	Coping reinstatement, vegetation cutting back
572	Nettleton	Rebuild wall
576	Chippenham	Timber Parapet Repair
391	Nettleton	Old Quarry Bridge, Chicks Grove. Inspection Scaffold
394	Chippenham Without	Hardenhuish Culvert - parapet replacement
395	Chippenham	Baydons Lane Footbridge, Chippenham. Redecking
397	Nettleton	Burton Bridge Nettleton
406	Biddestone	Ford Bridge crayfish refuge
410	Nettleton	West Kington Bridge, relay in situ concrete coping
421	Nettleton	Goulters Mill Castle Combe, bagwork to pier
442	Grittleton	Needles Culvert Hullavington. Remove vegetation
479	Grittleton	Needles Bridge Replacement
490	Nettleton	Edge Corner - parapet replacement & loose masonry
518	Chippenham	Waterworks Tubewright Post and Rail fencing
519	Sutton Benger	Judy Pearce Parapet Masonry
543	Grittleton	Needles Bridge, Additional Drainage Works



**Drainage works since 2015**

No	Location	Description
316	Chippenham	Upgrades to existing systems
324	Chippenham	Rebuild of catch pit
342	Chippenham	New Gully and connecting pipe work

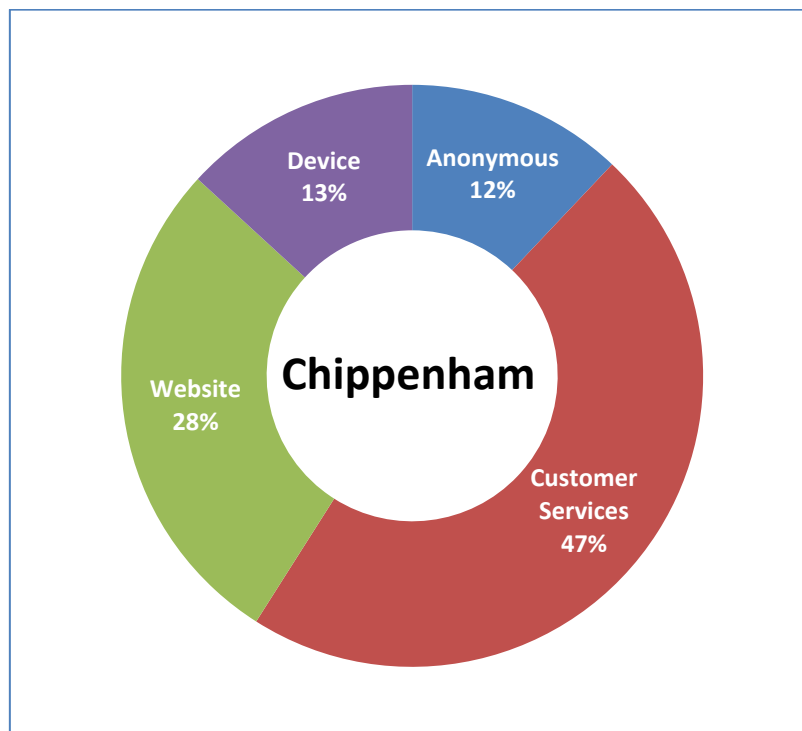
## My Wiltshire



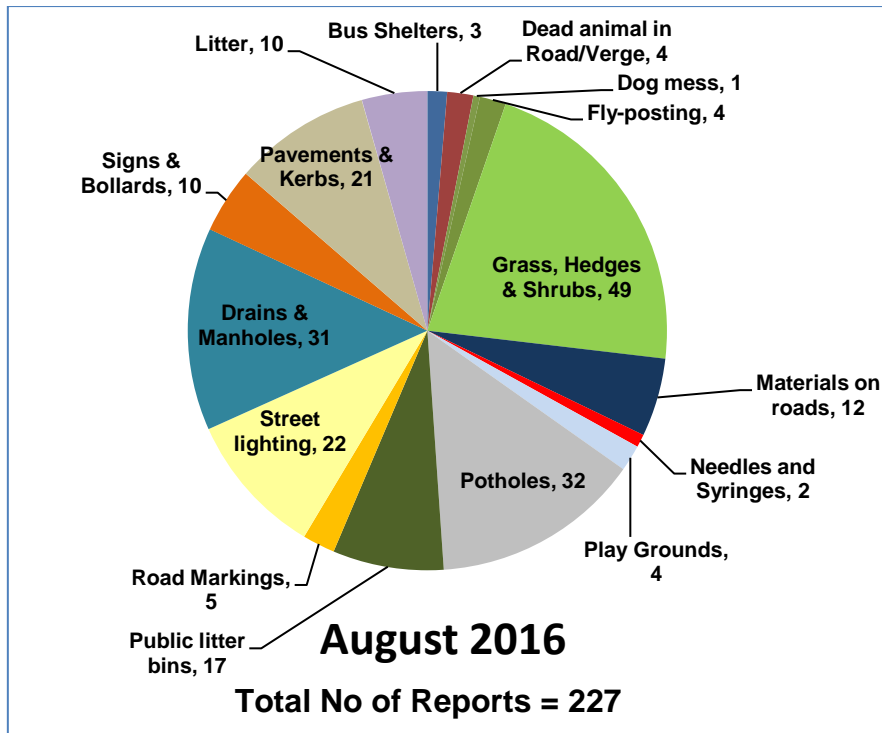
My Wiltshire provides an easy way to report highway issues, including using the Council's website. We have an app so you can report on the go using your smartphone. The My Wiltshire app is available to download at both the [App Store](#) (for iPhones and iPads), from [Google Play](#)<sup>™</sup> (for Android phones) and Windows Store. You can attach information such as photos or videos and pinpoint the location of your report using the mapping software on your phone.

A summary of recent reports in your area is shown below, and further details are shown in Appendix B.

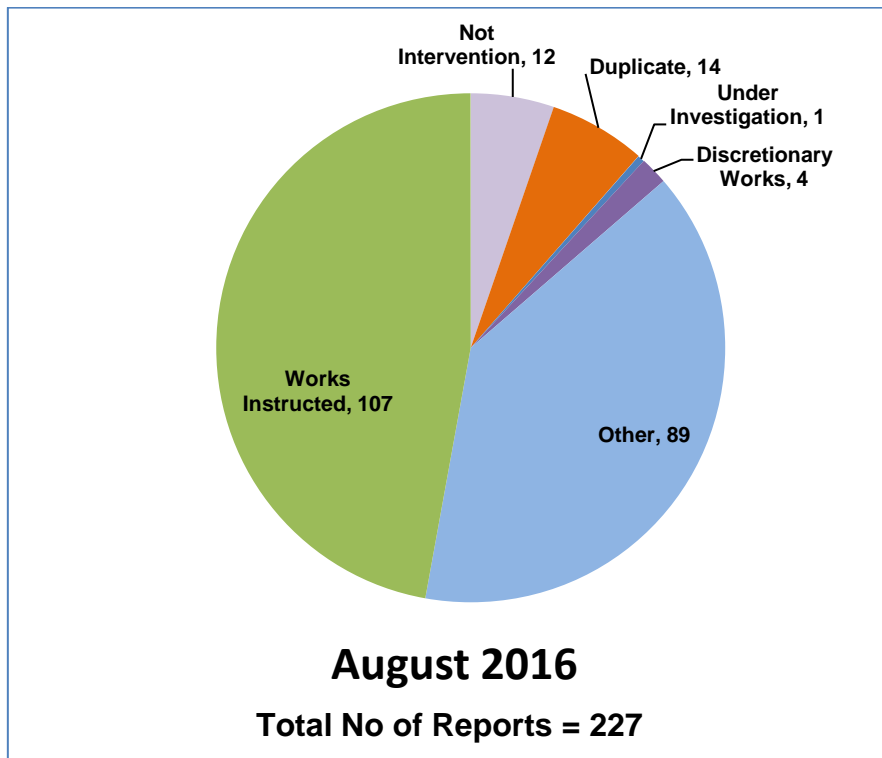
### Customer reporting methods in your area



**Customer reports in your area for the month of August 2016**



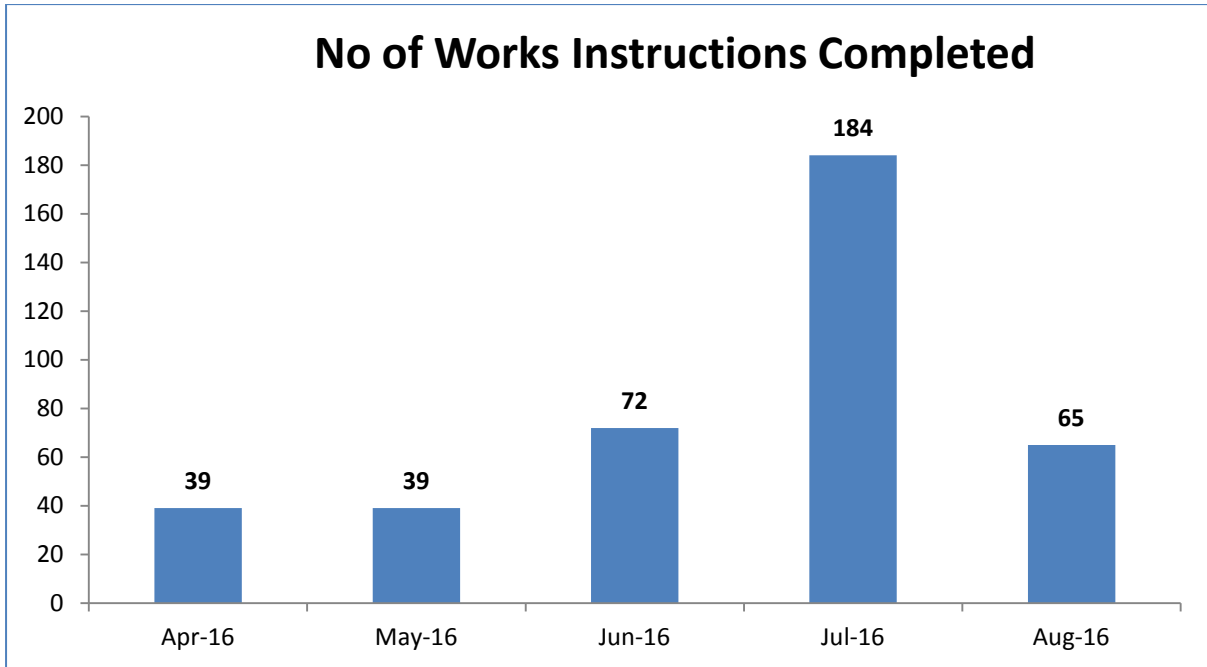
**Actions following recent reports in your area**



## Action definitions

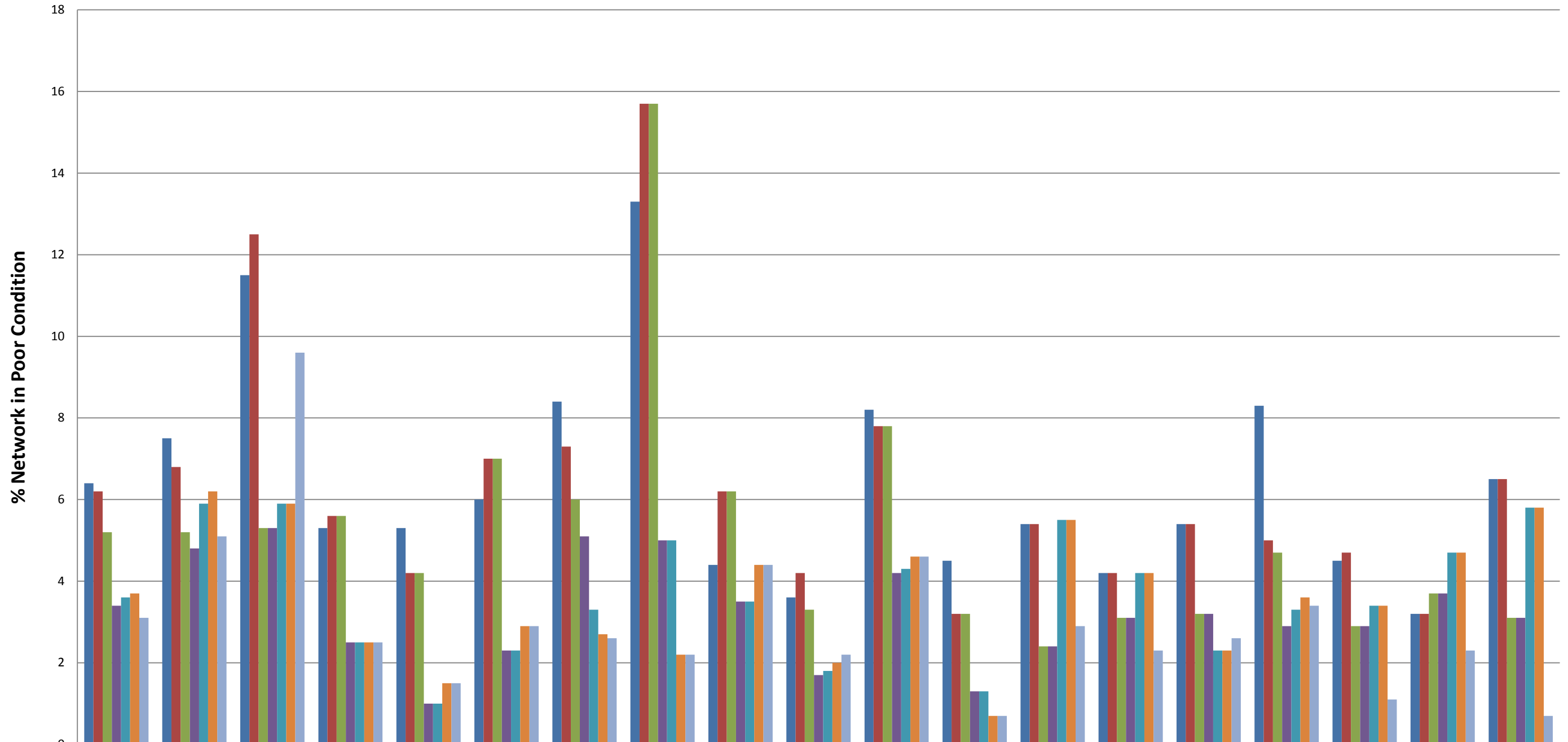
1. **Not Intervention** – the technician has attended site and classified the defect as not meeting intervention levels as per the Highway Inspection Manual 2013 or in the case of streetscene reports, service level agreements.
2. **Duplicate** – a report has already been received in relation to this issue and a works instruction has previously been passed to the contractor to undertake a repair/carry out the necessary works.
3. **Under Investigation** – this issue is currently with a Highways technician or engineer – they may be awaiting information from the customer or the issue requires further investigation e.g. wet weather inspection, drainage survey, exploratory excavation, ownership query.
4. **Discretionary works** – this issue is not a highway safety issue and has been identified as one which falls within the remit of the parish steward scheme.
5. **Other** – the issue has been identified as one which does not require any action by Local Highways. This could be for a number of reasons –
  - the report has been cancelled by the user,
  - there is insufficient information provided to assess the issue and the customer has not provided contact details,
  - the issue is not the responsibility of Wiltshire Council e.g. un-adopted highway, gas/electricity/telephone/water/cable company, Highways England, housing association,
  - the technician attended site and nothing was found at the stated location
  - the issue has been passed to another service within Wiltshire Council e.g. rights of way, bridges.
6. **Works Instructed** – the technician has assessed the issue as requiring works to be carried out and has either dealt with the issue personally or has referred it to the contractor for repair.

Highway defects completed in your area in recent months



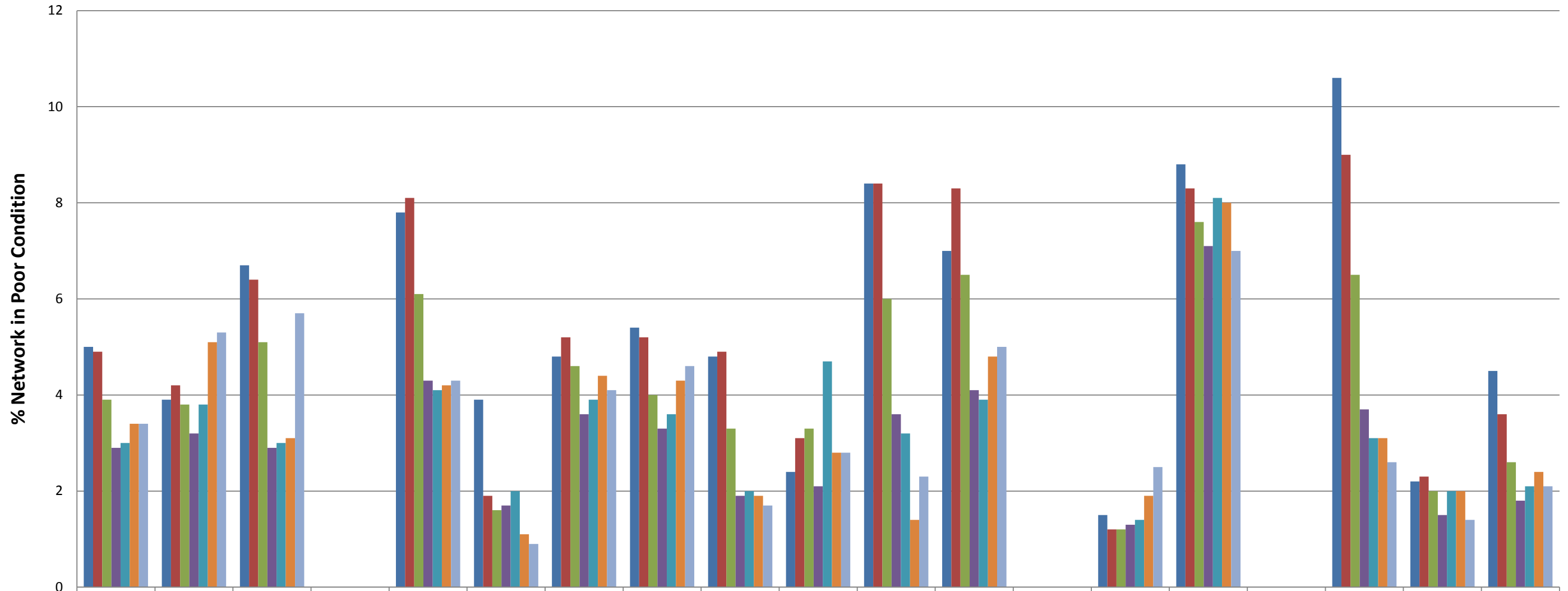


**% A Road Network in Poor Condition**



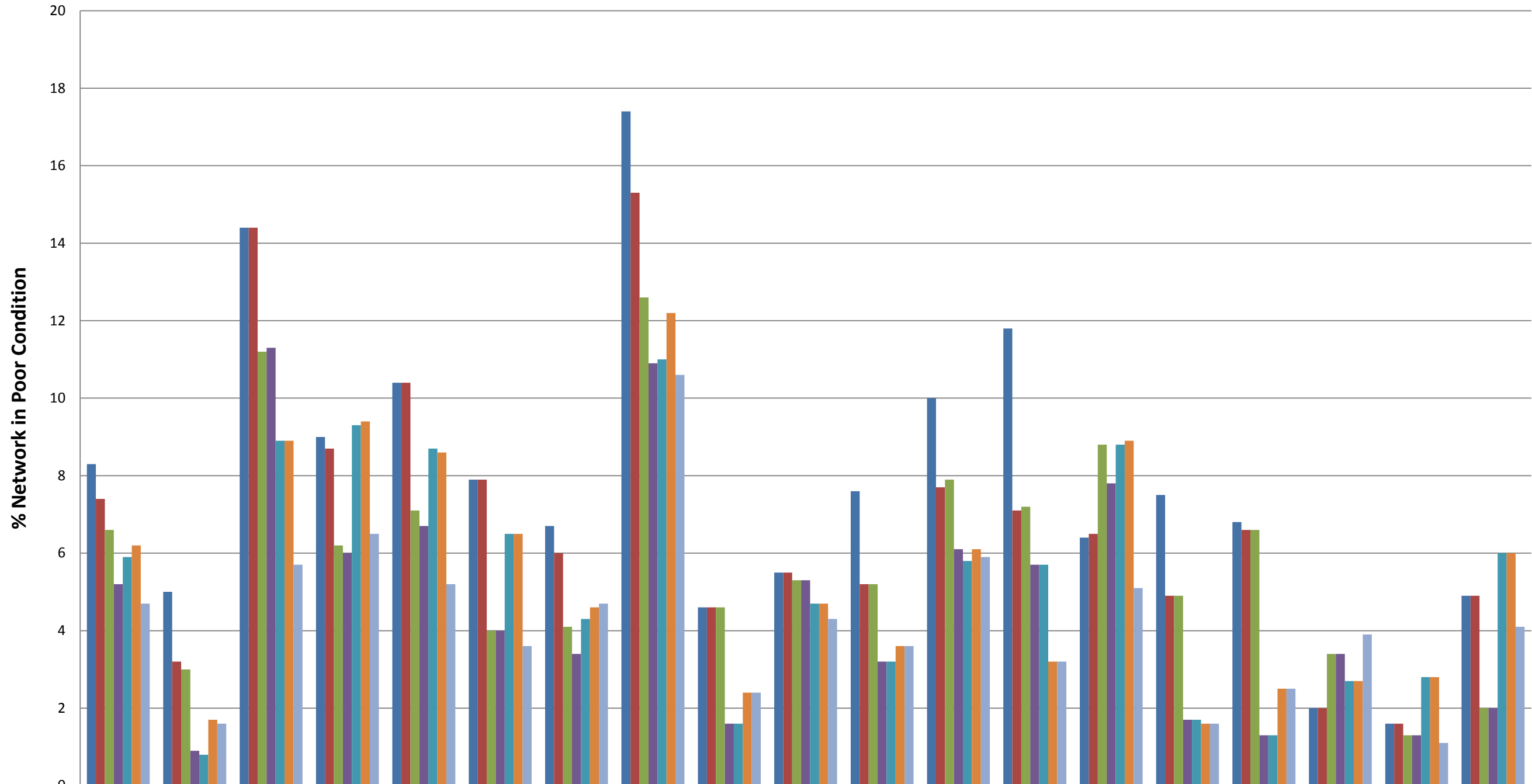
	Wiltshire	Amesbury	Bradford On Avon	Calne	Chippenham	Corsham	Devizes	Malmesbury	Marlborough	Melksham	Pewsey	Royal Wootton Bassett & Cricklade	Salisbury	South West Wiltshire	Southern Wiltshire	Tidworth	Trowbridge	Warminster	Westbury
■ 2009/10	6.4	7.5	11.5	5.3	5.3	6	8.4	13.3	4.4	3.6	8.2	4.5	5.4	4.2	5.4	8.3	4.5	3.2	6.5
■ 2010/11	6.2	6.8	12.5	5.6	4.2	7	7.3	15.7	6.2	4.2	7.8	3.2	5.4	4.2	5.4	5	4.7	3.2	6.5
■ 2011/12	5.2	5.2	5.3	5.6	4.2	7	6	15.7	6.2	3.3	7.8	3.2	2.4	3.1	3.2	4.7	2.9	3.7	3.1
■ 2012/13	3.4	4.8	5.3	2.5	1	2.3	5.1	5	3.5	1.7	4.2	1.3	2.4	3.1	3.2	2.9	2.9	3.7	3.1
■ 2013/14	3.6	5.9	5.9	2.5	1	2.3	3.3	5	3.5	1.8	4.3	1.3	5.5	4.2	2.3	3.3	3.4	4.7	5.8
■ 2014/15	3.7	6.2	5.9	2.5	1.5	2.9	2.7	2.2	4.4	2	4.6	0.7	5.5	4.2	2.3	3.6	3.4	4.7	5.8
■ 2015/16	3.1	5.1	9.6	2.5	1.5	2.9	2.6	2.2	4.4	2.2	4.6	0.7	2.9	2.3	2.6	3.4	1.1	2.3	0.7

### % B Road Network in Poor Condition



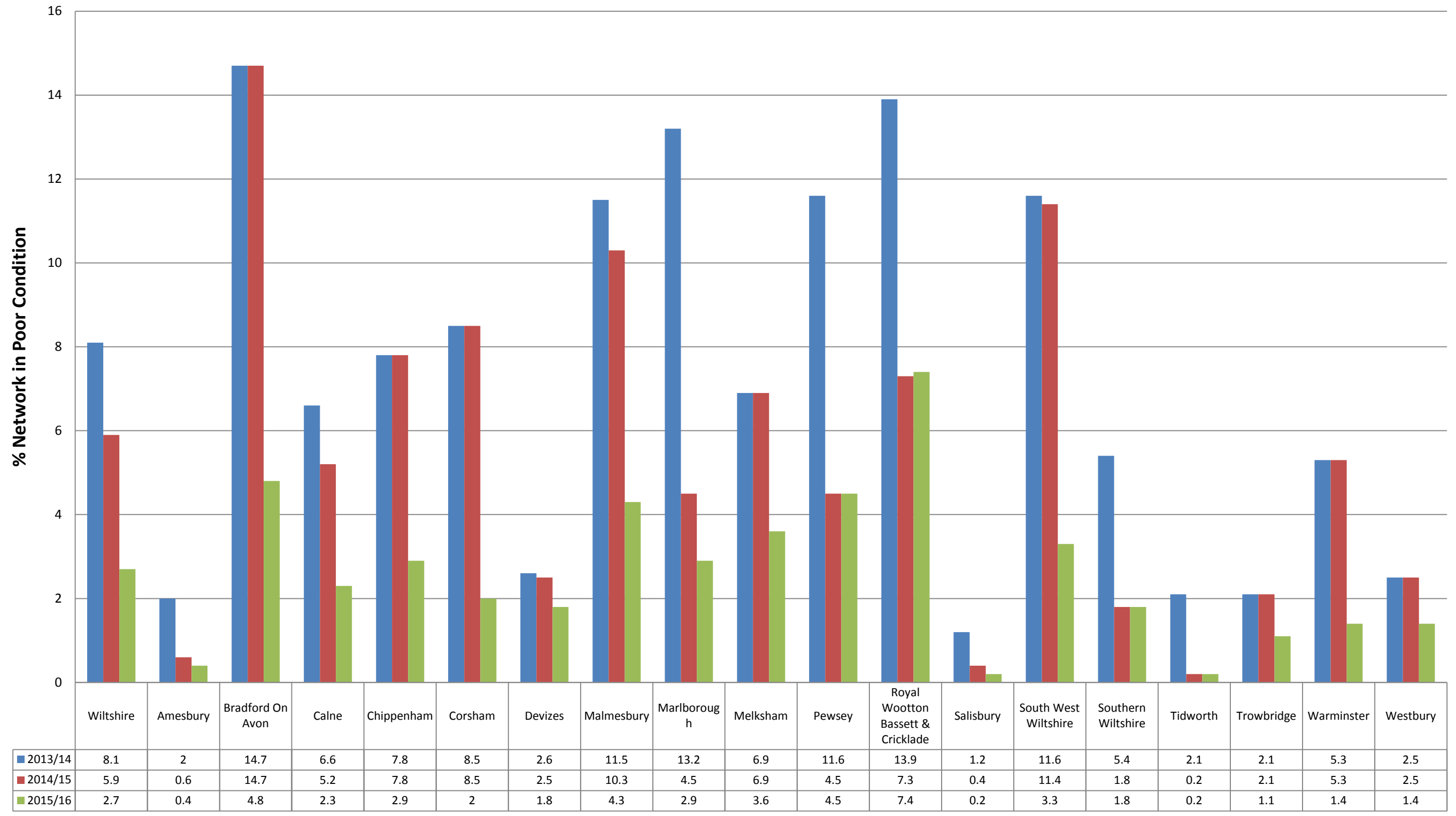
	Wiltshire	Amesbury	Bradford On Avon	Calne	Chippenham	Corsham	Devizes	Malmesbury	Marlborough	Melksham	Pewsey	Royal Wootton Bassett & Cricklade	Salisbury	South West Wiltshire	Southern Wiltshire	Tidworth	Trowbridge	Warminster	Westbury
■ 2009/10	5	3.9	6.7	0	7.8	3.9	4.8	5.4	4.8	2.4	8.4	7	0	1.5	8.8	0	10.6	2.2	4.5
■ 2010/11	4.9	4.2	6.4	0	8.1	1.9	5.2	5.2	4.9	3.1	8.4	8.3	0	1.2	8.3	0	9	2.3	3.6
■ 2011/12	3.9	3.8	5.1	0	6.1	1.6	4.6	4	3.3	3.3	6	6.5	0	1.2	7.6	0	6.5	2	2.6
■ 2012/13	2.9	3.2	2.9	0	4.3	1.7	3.6	3.3	1.9	2.1	3.6	4.1	0	1.3	7.1	0	3.7	1.5	1.8
■ 2013/14	3	3.8	3	0	4.1	2	3.9	3.6	2	4.7	3.2	3.9	0	1.4	8.1	0	3.1	2	2.1
■ 2014/15	3.4	5.1	3.1	0	4.2	1.1	4.4	4.3	1.9	2.8	1.4	4.8	0	1.9	8	0	3.1	2	2.4
■ 2015/16	3.4	5.3	5.7	0	4.3	0.9	4.1	4.6	1.7	2.8	2.3	5	0	2.5	7	0	2.6	1.4	2.1

### % C Road Network in Poor Condition



	Wiltshire	Amesbury	Bradford On Avon	Calne	Chippenham	Corsham	Devizes	Malmesbury	Marlborough	Melksham	Pewsey	Royal Wootton Bassett & Cricklade	Salisbury	South West Wiltshire	Southern Wiltshire	Tidworth	Trowbridge	Warminster	Westbury
■ 2009/10	8.3	5	14.4	9	10.4	7.9	6.7	17.4	4.6	5.5	7.6	10	11.8	6.4	7.5	6.8	2	1.6	4.9
■ 2010/11	7.4	3.2	14.4	8.7	10.4	7.9	6	15.3	4.6	5.5	5.2	7.7	7.1	6.5	4.9	6.6	2	1.6	4.9
■ 2011/12	6.6	3	11.2	6.2	7.1	4	4.1	12.6	4.6	5.3	5.2	7.9	7.2	8.8	4.9	6.6	3.4	1.3	2
■ 2012/13	5.2	0.9	11.3	6	6.7	4	3.4	10.9	1.6	5.3	3.2	6.1	5.7	7.8	1.7	1.3	3.4	1.3	2
■ 2013/14	5.9	0.8	8.9	9.3	8.7	6.5	4.3	11	1.6	4.7	3.2	5.8	5.7	8.8	1.7	1.3	2.7	2.8	6
■ 2014/15	6.2	1.7	8.9	9.4	8.6	6.5	4.6	12.2	2.4	4.7	3.6	6.1	3.2	8.9	1.6	2.5	2.7	2.8	6
■ 2015/16	4.7	1.6	5.7	6.5	5.2	3.6	4.7	10.6	2.4	4.3	3.6	5.9	3.2	5.1	1.6	2.5	3.9	1.1	4.1

### % Unclassified Road Network in Poor Condition



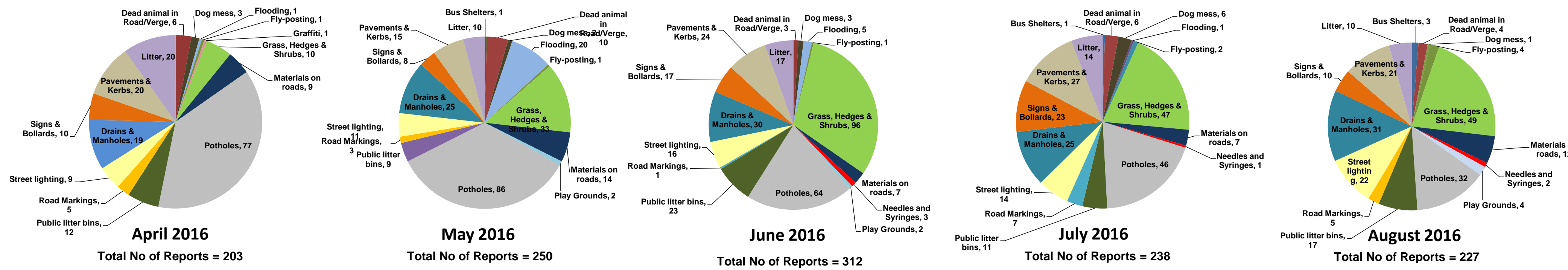
# Appendix B: My Wiltshire Statistics



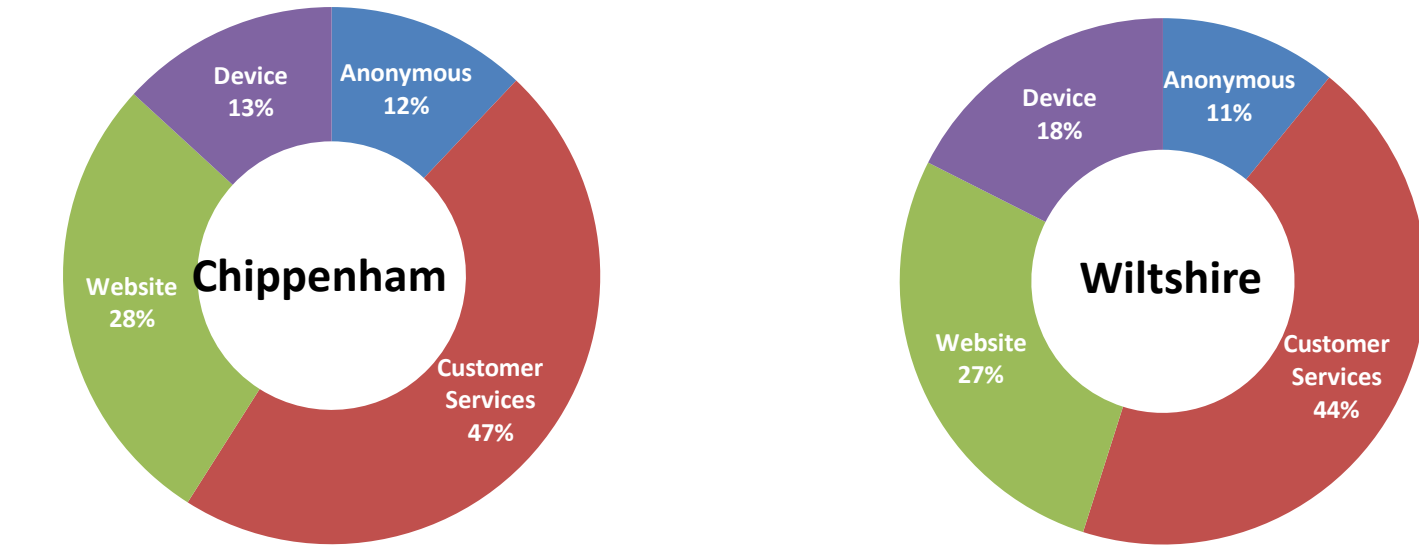
## Chippenham Area Board



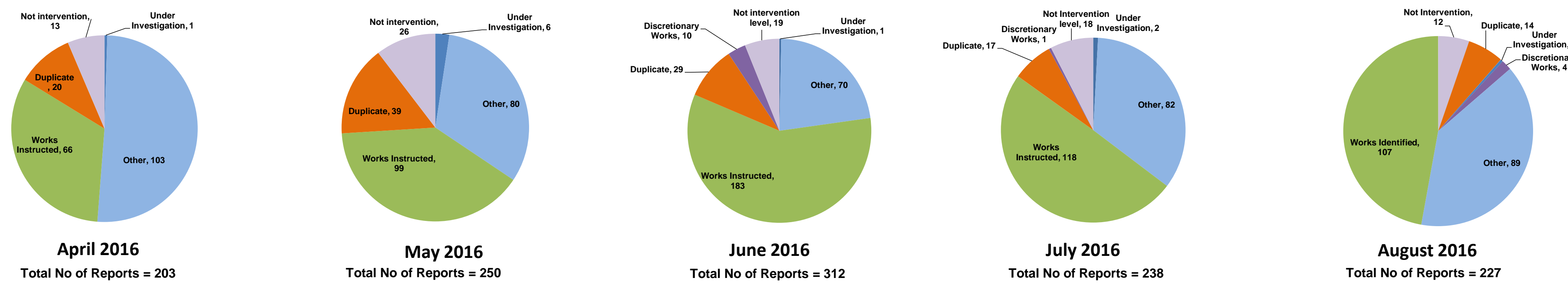
### Customer Reported Issues



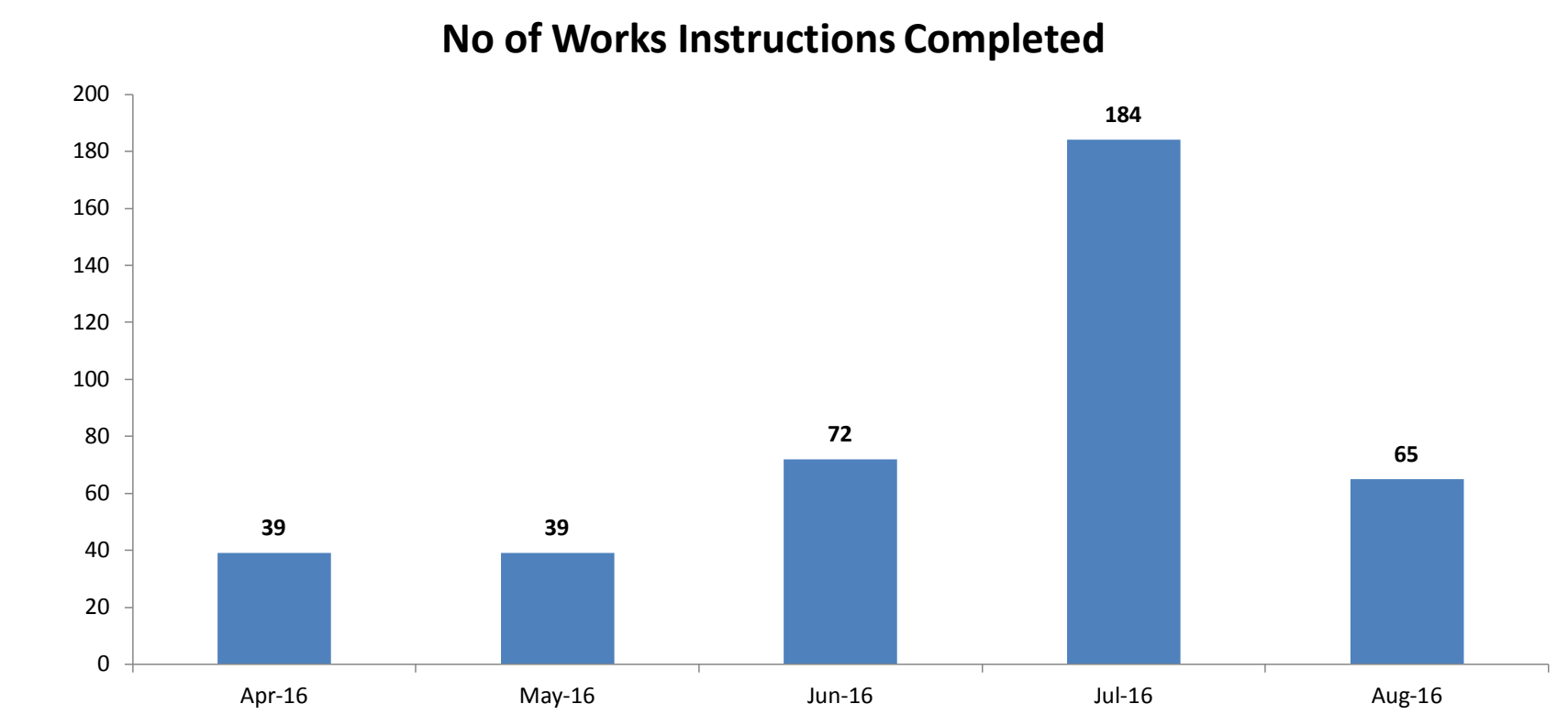
### Reporting Channels



### Customer Call Outcomes



### Completed in Month



### Safety Inspections

